



MULTI-FAMILY BROCHURE

RETNAUER BAYNES ASSOCIATES, LLC



CONTENT

 INTRODUCTION

 DESIGN PROCESS

 PORTFOLIO

 REFERENCES



INTRODUCTION

Retnauer Baynes Associates is pleased to introduce our Architectural, BIM and Visualizations firm based in Chesapeake, VA. We have a passion for what we achieve and constantly strive to demonstrate this passion to our clients. We are experts in the types of projects we target and instill our clients with confidence during the design and building process. We are more than a group of people working together. Our group has the ultimate goal of providing to our clients, design services that not only satisfy the conditions of each project but also extend beyond so that each client becomes educated in what excellence in design should be.

Our mission is to provide outstanding design services to all of our clients, not matter the size or scope of the project. By utilizing our experience, the power of technology and our resources, we shall strive to exceed our client's expectations.



VISION

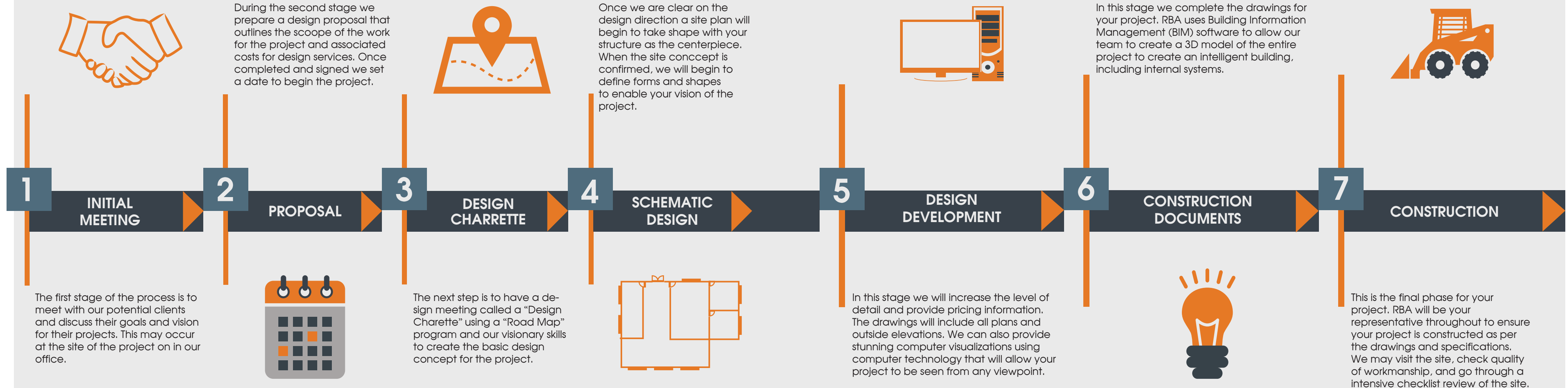
RBA's vision is to become a preeminent Design Firm in the Hampton Roads area sought after because of RBA's reputation for providing creative and economical solutions to all project types.



DESIGN PROCESS

COMMUNICATION IS THE KEY TO SUCCESS ON OUR PROJECTS

Each project is unique in our eyes and deserves to be treated as a unique project. RBA will customize our process for each of your projects to ensure your expectations and are successful in fulfilling your vision of your project.





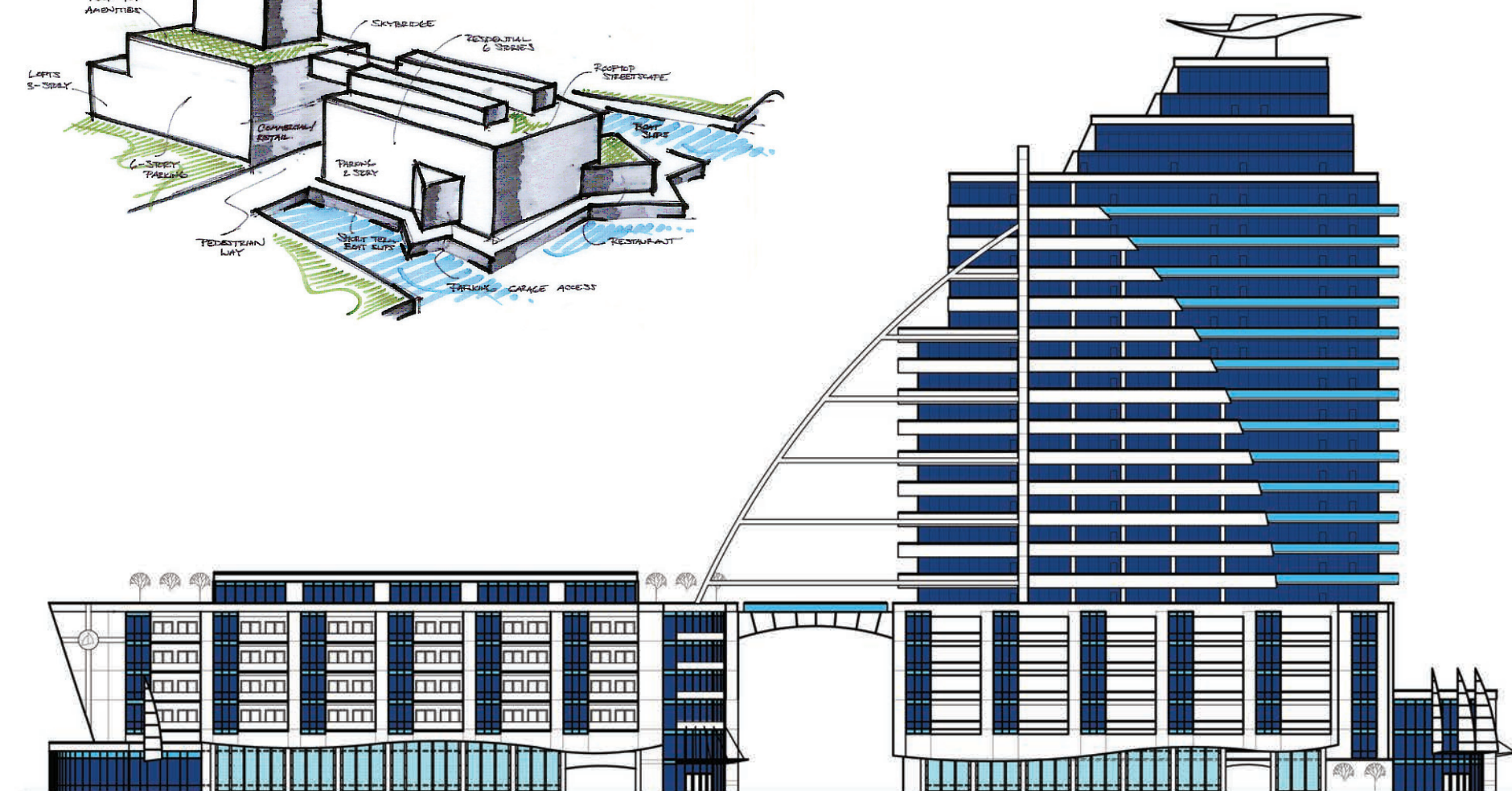
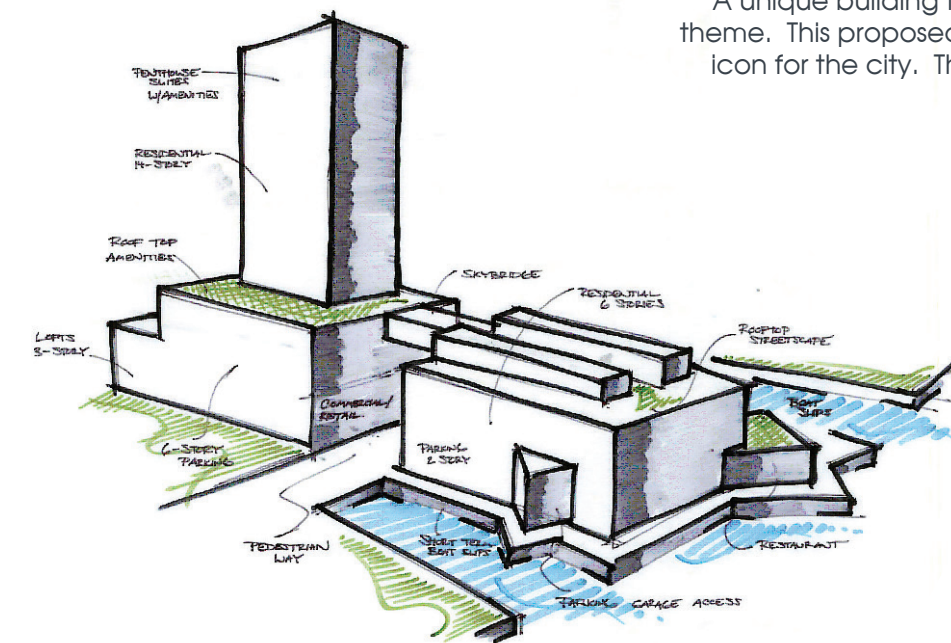
PORTFOLIO



BEAU RIVAGE

FORT NORFOLK NORFOLK, VIRGINIA

A unique building for a unique setting.... Norfolk, VA has long been associated with a nautical theme. This proposed project builds upon this theme and creates a building that will become an icon for the city. The beauty of sail is balanced by the contemporary smoothness of glass. This building will be a catalyst for the Fort Norfolk area of the city....





BEACH PLACE APARTMENTS

VIRGINIA BEACH, VIRGINIA

Situated one block from the Atlantic Ocean, this project is an example of coastal contemporary design. Utilizing colored siding and a brick veneer at the base, the building is reminiscent of traditional coastal towns. The corners of the site are anchored with a highly detailed tower which forms a beacon for the rest of the design.

LAW BUILDING

NORFOLK, VIRGINIA

100 Plume was constructed in 1909 and has served many people over the decades. Always used as an office building, the time has come to repurpose. To that end, our team repurposed the building to create micro- and standard apartments that will be unique in the Hampton Roads Area. Working within the confines of a historic building we have nestled in 130 apartments along with public and leasing areas.



Hailey's Cove Carriage Homes

CHESAPEAKE, VIRGINIA

This is a Duplex?

Why yes, it is! RBA was tasked in creating a design for a carriage home development where each building is actually 2 homes. The requirement was that the building appear to be a single family home. The end product far surpassed the clients desires and has been very popular in regards to sales.



REFERENCES

Stephen Quick IV

Stephen Alexander Homes
3 Greenbrier Circle, Suite 820
Chesapeake, VA 23320
757-369-3673

Shawn Ellis

York River General Contractors
108 Production Drive
Yorktown, VA 23693
757-369-3673

Buddy Gadams

Marathon Development
P.O. Box 11659
Norfolk, VA 23517
757-627-9873

Scott Troutman

Marlyn Development
308 35th Street Suite 101
Virginia Beach, VA 23451
757-437-1677

Robert Prodan

HAV, Inc.
3780 Shore Drive
Virginia Beach, VA 23455
757- 431-1481

John Lawson

W.M. Jordan Company
11010 Jefferson Ave.,
Newport News, VA 23601
757-596-6341

Florence Kingston

Director of Development
City of Newport News, VA
Newport News, Virginia
757-926-8428

Brian Rowe

Weldenfield, Inc.
803 Cypress Chapel Road
Suffolk, VA 23434
757-986-3259

Bill Blankenship

Ashdon Builders
321 Great Bridge Blvd.
Chesapeake, VA 23320
757-436-3757

Bill Terry

Ocean Properties, Inc.
508 Central Drive - Suite 105
Virginia Beach, VA 23454
757-631-6150

Petro Kotarides

Kotarides Developers
P. O. Box 12136
Norfolk, VA 23541
757461-1000

Chris Ettel

E. Neal Crawford
Monarch Bank
1435 Crossways Blvd., Suite 301
Chesapeake, VA 23320
757-389-5150

RETNAUER BAYNES ASSOCIATES, LLC

757-546-2471

432 BATTLEFIELD BLVD SOUTH, SUITE 101

CHESAPEAKE, VA 23322

INFO@RBAPC.COM

